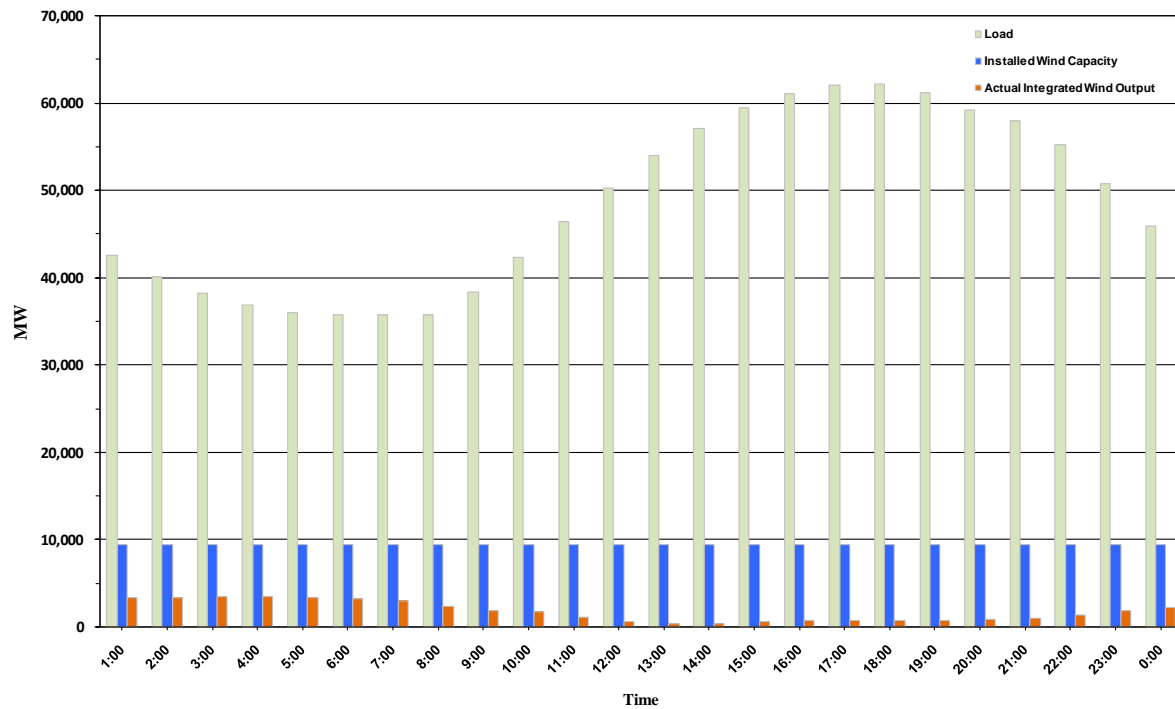




ERCOT Grid Operations Wind Penetration Report: 08/22/10

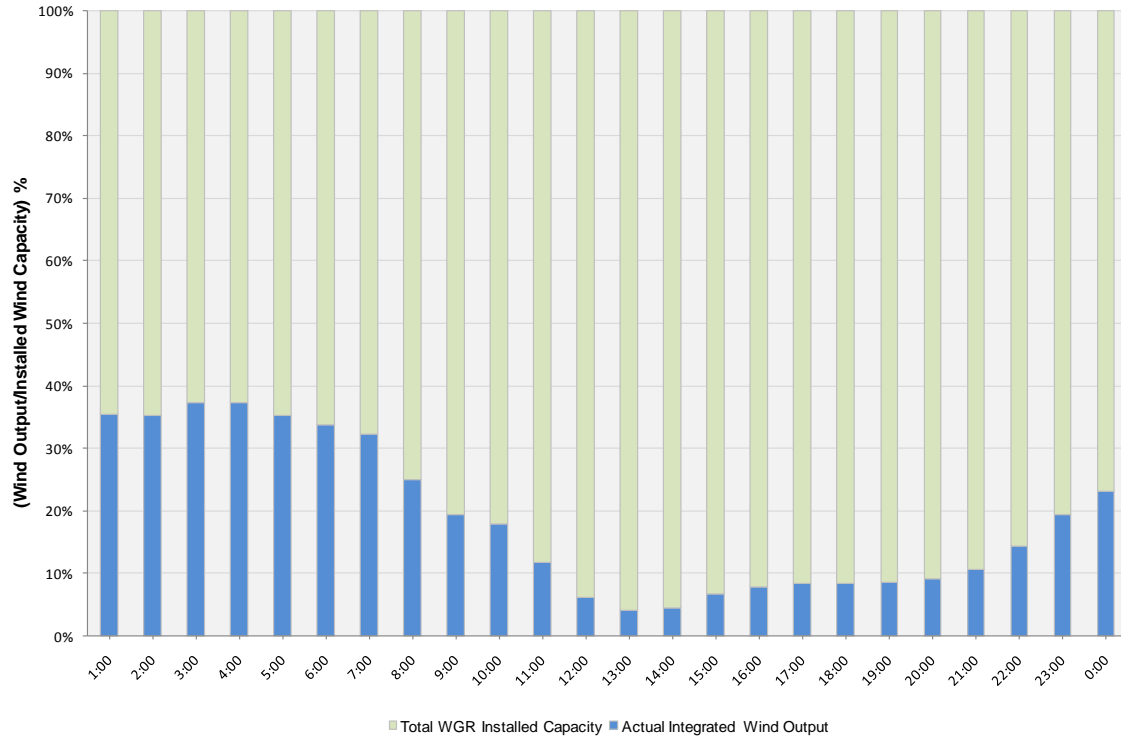
Peak Load	62,216 MW
Load Peak Hour	18
Wind Record 06/12/10	7016 MW
Max Wind value	3582 MW
Wind Peak Hour	03:36:36
Wind Penetration %	9.74

Hourly Average Actual Load vs. Actual Wind Output
08-22-2010

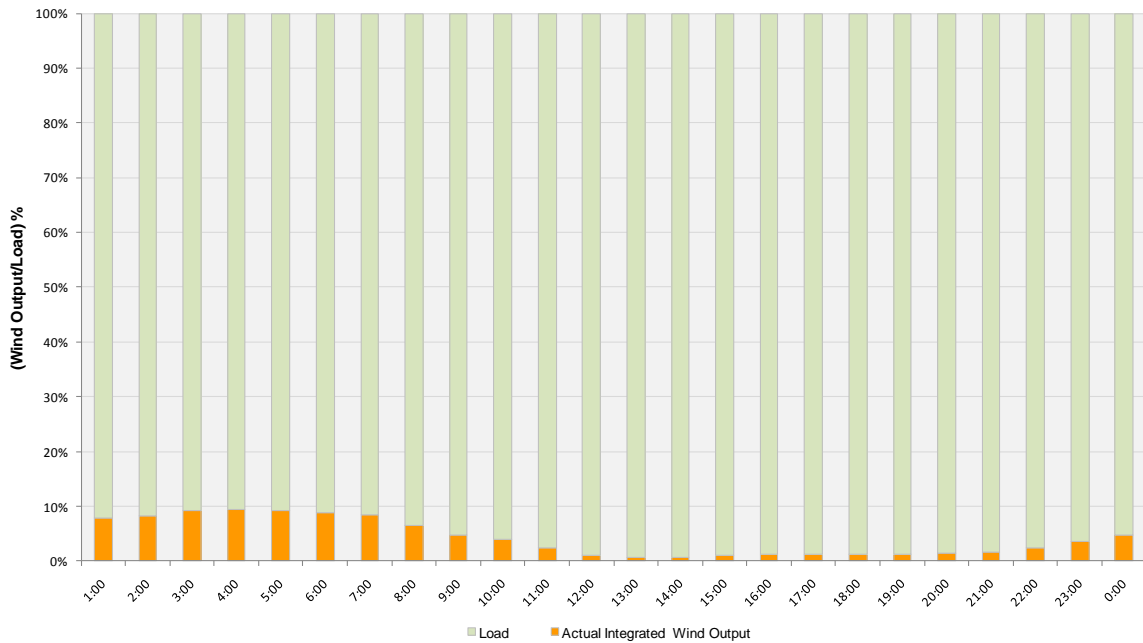




Actual Wind Output as a Percentage of the Total Installed Wind Capacity
08-22-2010



Actual Wind Output as a Percentage of the ERCOT Load
08-22-2010





ERCOT Load vs. Actual Wind Output 08/15/10 - 08/22/10

